

NEWSLETTER – 6th February, 2015

PARTICIPATION IS THE KEY

Teaching and Learning at Woodridge State School
recognised as "One of the Best" in Queensland

FROM THE PRINCIPAL'S DESK

Welcome to our school for 2015. A year of challenge and courage for us all to meet and apply so that every day is a better one than the day before.

Welcome to our new families and to our new staff. This week, we have confirmed our enrolment figures for 2015 funding and staffing purposes at 694 with 82 in Prep and 176 in the English Intensive Language Centre.

A special welcome to Ms Laura Cullen our Behaviour Support Teacher and to Ms Tania Kelly and Ms Molly McCormack our speech pathologists.

Thank you to all those parents, care-givers and staff who have prepared the children, our grounds, our facilities and programmes for such a fine beginning for the 2015 school year. We have begun our work for this year confidently, organised and happily together. Although with this planning and organisation, things sometimes go a different way from which we've planned, we are determined to go on to succeed. So with a review and a "smile" we bounce back and journey on to do our best each day.

We have had new painting in A Block-ILC and office, and new ceilings in the Lower level of I Block - our S.E.P., new Interactive Whiteboards and Comboxes in F Block, I Block, Prep and Resource/Science Centre and concreting on the basketball apron. Thank you to our ICT team and Facilities team for these improvements.

Parents and Caregivers are reminded that our staff do their very best to help their children each day. If children have concerns they need to talk to their teachers. If they feel less confident they can use the "What's Up Box" in the Resource Centre, Office, Breakfast Club area or at the Tuckshop. These boxes have slips which can have concerns written on them and names put down for follow-up by our Behaviour Team (Yellow Slips) or our Environment Club (Green Slip) if the concern is related to Water, Energy or grounds or building safety.

Safety Tips

- Remember the school shade hat is a must if we are out in the sun!
- Watch out for road safety. Cross the roads and use our car park safely, thank you!

EXPECTATIONS FOR THE FOUR SCHOOL RULES: I am Safe, I am Respectful, I am Caring and I am a Learner. We expect students to respond to instructions and directions in appropriate ways; safely, caringly, respectfully and in a learner's way.

Finally, we have set the target of 95% attendance again for this year. Some students made it to 100% - well done! Our School's average for 2014 was 93%. I am sure we can do better this year.

Best wishes for a great fortnight ahead.

Garry Molloy – Principal

D & C NEWS

Welcome all families to a new school year! The first P&C meeting and AGM will be held on Monday February 16th at 3 pm in the RPC room. We encourage everyone to come along, you don't need to do a 'job' just come and share your ideas.

Uniform Shop

We are currently out of stock (sizes 6, 8 & 10 shirts) and will notify in the newsletter when the order comes in. **Uniform Shop Hours:** Tuesday and Friday Mornings from 8.15am to 9.00am.



IMPORTANT DATES!

Tuesday 24th February – Prep Welcome Breakfast 7.45am-8.30am.

Wednesday 25th Feb – Years 5 & 6 Cricket World Cup, Gabba (limited numbers only).

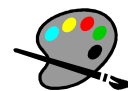
Friday 20th March – Harmony Day

Meet & Greet will take place in weeks 4 & 5, please look out for a note from your child's teacher next week.

VOLUNTARY FINANCIAL CONTRIBUTION

Please find attached to this newsletter a Voluntary Financial Contribution form. These funds are used by the school to provide an enhanced educational service and to enhance resources available for student learning, recreation and comfort and may include:

- Reprographics (other than classroom materials and workbooks)
- Arts and craft supplies
- Cooking materials



The contributions can be paid either in full \$60-00 or in instalments eg. \$15 per term. Payment details are on the form. Could you please read and complete this form and return it to the school by Friday 13th February 2015. **Thank you to all Parents/Carers who have already paid.**

From the Mobility Support Teacher

Attendance – Every Day Counts

As part of our school policy and “Every Day Counts”, it is expected that all students attend school regularly, please send a note or make a call to our office explaining your child's lateness or absence. Also, if your child is absent for 2 or more days, please visit your local doctor as the school requires a **medical certificate** to support that your child is too sick to attend school. All student absences need to be explained and are reported on the student's end of semester report card. Persistent lateness and absence will lead to contact with home."

Calendars

Please find included with your newsletter our Woodridge State School calendar to place on your fridge. The calendar is colour coded to provide parents with important special dates, pupil free days, public holidays and school holidays. We hope this is a valuable resource to assist all families. If there is anything else that you feel would help support your family, please contact **Anna Lynch on 3440 2333**

Aboriginal and Torres Strait Islander Meeting

We will be holding a meeting with special guests from James Cook University on **Friday 20th February** in the **Wellbeing Centre**. We look forward in continuing our partnership with our families. The meeting will be at 11.30am. Light refreshments will be provided and your input is valued, we look forward to seeing you then.

Homework Hub

Thank you to all the families who continue to support our Homework Hub. We had sign-on day yesterday, but there are still plenty of spaces, feel free to pick up a registration form from the office. Homework Hub is run by Ganyjuu **Every Tuesday from 2.45-3.45pm during the school term. However not in the first and last week of each term.** Please be punctual in picking up your child.

Playgroup (Tuesday and Friday)

We have two playgroups and both will be in operation as of next week.

Tuesday playgroup is run by Ganyjuu every **Tuesday morning 9am – 11am**. Please contact Ganyjuu on 1800 794 303 or 3200 4762 if you require transport.

Friday playgroup is run by Amanda James every **Friday morning 9am -11am**. Playgroup is open for children up to 5 years.

You are welcome to join in with some activities for the children. Morning Tea will be provided.

Let's Stay Put

We would like to welcome all our new parents and congratulate all our existing parents in making the commitment to **Stay Put** at Woodridge State School. We look forward in continuing to work in partnership with you.

Win a \$10000 grant for the school or many family prizes.

AUSTRALIA –The Story of Us

Extraordinary stories from 40000 years of our history

Primary School Challenge

How students and schools can win.

1. Students watch the historically based Television program “Australia: The Story of Us” broadcast on Channel Seven every Sunday commencing from Sunday 8 February.
2. Go to Yahoo7.com.au/StoryOfUs and answer the quiz questions related to that episode.
3. Students sign up with their name and school details (with parent/guardian consent)
4. Each correct answer contributes to the final score.
5. Minor prize winners will be announced on the website each week.
6. Five finalist schools in each state will be invited to tell why they should win the grant.
7. One winning school in each state will receive \$10000, thanks to iiNet.

This is a quiz for primary school students aged 9-13 (Students in Years 4, 5, & 6) Each week students and their families can win great prizes just for participating.




Kaleidoscope Kids Logan Central

Quality Early education programs for children aged 6 weeks to 6 years.

We provide:

- Quality Early Education Program
- Full time Early Childhood Teacher
- Queensland Kindergarten Curriculum
- Qualified, friendly Educators
- Modern Facilities
- Beautiful outdoor playgrounds
- Healthy and nutritionally balanced meals
- Nappies, wipes and sunscreen.

T-shirt, hat, drink bottle and bag received on enrolment.

143 Wembley Road, Logan Central Q 4114

Ph: 07 3444 0040

E: logacentral@kkids.com.au

www.kkids.com.au

STUDENT AWARDS

Key to Success Awards

O = Organisation

C = Confidence

R = Resilience

G = Getting Along

P = Persistence



	Week Ending – 6/02/2015	
1A	Meri, Ryco	G, O
1C	Ayoub, Edouard	O, O
4C	Reece, Klinpaka	C,O
5A	Angelika	C
ILC B	Abdiwadud	G
ILC C	Thuy	C
ILC D	Lucie	C

You are invited to our 2015 Community in the Classroom Day – Monday 9th February

Venue: Student Centre

Time: 8.40am – 10.10am

What's on?

8.40 Student Assembly

9.00 Parent Information Session

9.30 Classroom Visits

10.00 Sausage Sizzle - \$2 drinks, \$2 Sausages



NO SMOKING ZONE – AS FROM 1ST JANUARY, 2015



The no smoking zone for schools extends to **5 metres beyond the schools fence line.** (This also includes the use of electronic cigarettes).